



Video Monitor for Andover Continuum™

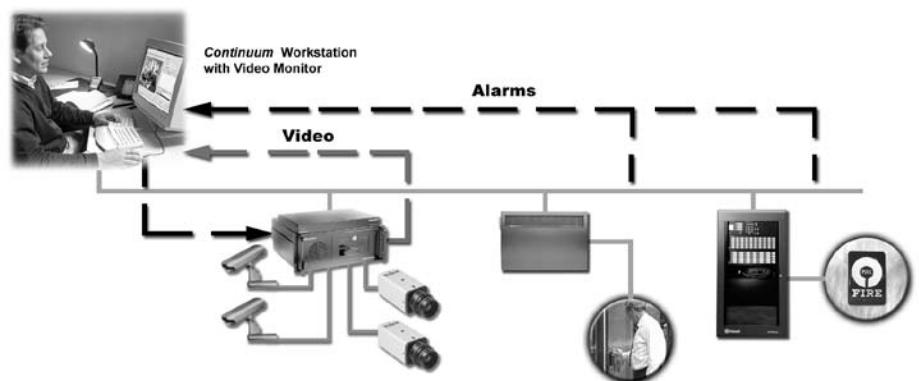
SEAMLESS ALARM-TO-VIDEO INTEGRATION

Video Monitor is a feature-rich, easy-to-use software package for your Andover Continuum Security Management System, providing seamless alarm-to-video integration between the Andover Continuum CyberStation™ front-end and Integral Technologies Digital Video Recording (DVR) units. With Video Monitor, link any alarm point on your network, even third-party BACnet points, to any camera tied to an Integral DVX or DigitalSentry recording unit. Active alarms — a forced entry alarm, a motion sensor alarm, a high temperature alarm, a fire pull station alarm — will automatically pop up live video on the CyberStation PC. Upon alarm, the DVR's recording mode automatically changes from motion recording to continuous recording with pre- and post-alarm video capturing.

- Seamless Viewing of Live and Recorded Video from Integral DVRs to the Andover Continuum CyberStation
- Alarms Automatically Pop Up Live Video on CyberStation Screen
- Link Any Alarm Point, Including Third-Party BACnet Points, to Any Camera
- Switch Up to 4 Different Camera Views per Input Point for Complete Alarm Assessment
- Pre- and Post-alarm Recording — Analyze the Entire Alarm Event
- Continuous Recording Mode is Ensured During Alarms
- Easily Control PTZ Cameras and Presets Remotely Across the Network
- Video Monitor Plus Option Links Motion Video Clips to Personnel Access Events — Search by Door or Person
- Simple Click (or Search by Name or Card Number) to Verify Picture and Other Personnel Information

View live and recorded video at the same time using Video Monitor's dual-window screen, and switch up to four different camera views per alarm point for quick, clear alarm assessment. CyberStation operators located anywhere on the network can control Pan-Tilt-Zoom (PTZ) cameras remotely and select presets with one click for a true enterprise-class digital video surveillance system.

The Video Monitor Plus option integrates Andover Continuum's Personnel Editor functionality with your Integral digital video system. Search for cardholders in the Andover Continuum database and view motion video clips linked with their access events, or bring up a complete history of past motion video clips associated with access events at a specific door.



Sample Andover Continuum Security Management System Using Video Monitor Software

INTUITIVE, USER-FRIENDLY INTERFACE

The easy-to-use Video Monitor screen pops up automatically when an alarm arrives at the Andover Continuum CyberStation. Video Monitor clearly displays the names of both the alarm and the alarm point that triggered it. Video Monitor can also be launched at anytime manually to review prior alarm video.

Video Monitor provides three different default viewing modes:

Live/Live Mode:

Displays live video on both the left and right side of the screen. By default, the left view displays live video from the first camera while the right view displays the live view from the second camera. Switch to another camera view (up to four per point) by clicking on it in the "Camera Selection" window. At any time, you can stop the live view, or pause and print a video image.

Live/Recorded Mode:

Displays live video from the first camera on the left and recorded/alarmed video from this same camera or from any of the three other cameras you select on the right. In this mode, you can click in the "Alarm List" box and play several different time stamp videos of the alarm, or select a different time period from the "Time Selection" box to bring up a different set of recorded videos.

Single Live Mode:

Displays a single live video on the screen. By default, this mode plays a live video from the first camera when launched. At any time, you can switch to another camera view. In addition, in Single Live Mode, you have the option of increasing the video viewing area by 1x, 2x, or 2.5x.

Although the default view mode is Live/Live after the first installation, the user can change the default and switch back and forth between the three different modes using the drop-down menu. All modes are sized to allow multiple occurrences (up to three) of Video Monitor to run simultaneously, such as when multiple alarms occur.

A dropdown "Options" menu at the top of the Video Monitor screen allows you to specify the number of seconds to view before and after an alarm, and to adjust the image quality and speed of video playback.

Six PTZ control buttons allow the CyberStation operator to easily position a PTZ camera across the network — pan left and right, move up and down, and zoom in and out. In addition, the operator can click on one of six PTZ preset buttons from the interface to set the preposition of the current camera. On alarm, Video Monitor can be configured to automatically call up a particular PTZ preset.

Use the handy "Unlock" button to unlock/lock any door being viewed and click on the "PE Function" button to launch a pre-programmed Andover Plain English™ custom sequence or macro for easy interfacing to third-party systems such as intercoms.

BACnet VIDEO INTEGRATION

Along with Andover Continuum alarm points, Video Monitor can also be triggered by third-party BACnet devices, in strict accordance with ASHRAE standard 135-2001. For example, upon a pull station-originated fire alarm, a BACnet fire panel can trigger video to pop up immediately on the Andover Continuum CyberStation screen. The operator can quickly assess the situation in that area and review a recorded video clip of the person who pulled the alarm.

Similarly, an intrusion point from any third-party BACnet security system can trigger video on the CyberStation screen and provide quick operator assessment of a possible security breach.

ADD PERSONNEL TRACKING WITH VIDEO MONITOR PLUS

The Video Monitor Plus option adds a valuable personnel tracking/access event tie-in to your Andover Continuum system. Search for any cardholder in the Andover Continuum database by Last Name, First Name, Employee Number, Expiration Date, Card State, or any combination of these fields. Video Monitor Plus automatically

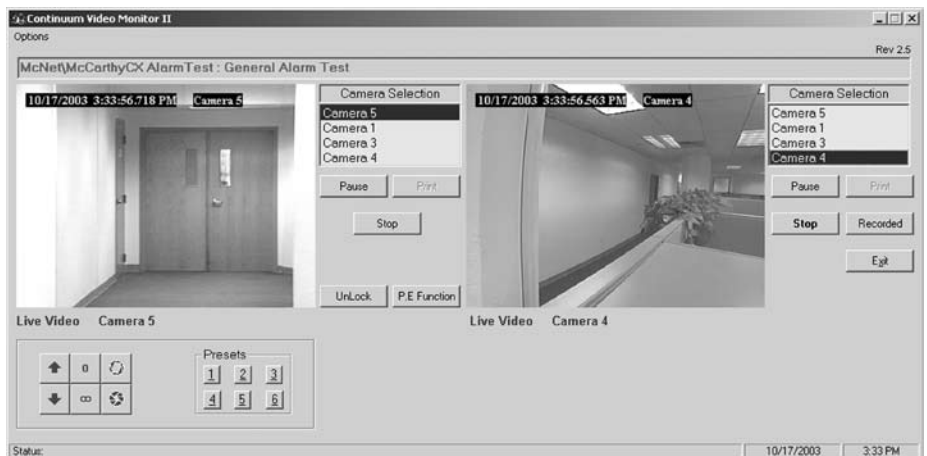
brings up the selected cardholder's record to provide immediate photo verification. Click on the "Person Event" button and see all the access events for that cardholder. Then, you can click on any access event in the list to view the video clip associated with that card holder at each door. With Video Monitor Plus, you can literally create a video audit trail of a cardholder as you follow him from one door to another!

Clicking on the "Door Event" button displays a list view of all access events associated with the current door being viewed, including Time Stamp, Cardholder Name, and Event Type. Click on an item in the list to display the photo and name of the cardholder linked to an event and play any associated motion video.

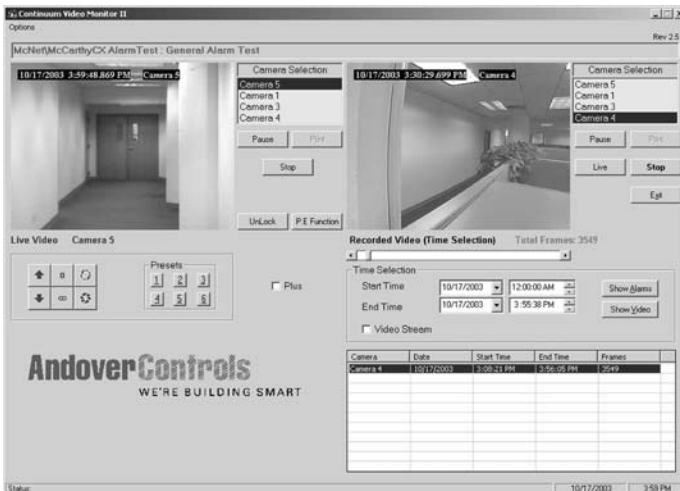
VIDEO MONITOR EXAMPLE SCREENS



Single Live Mode



Live/Live Mode



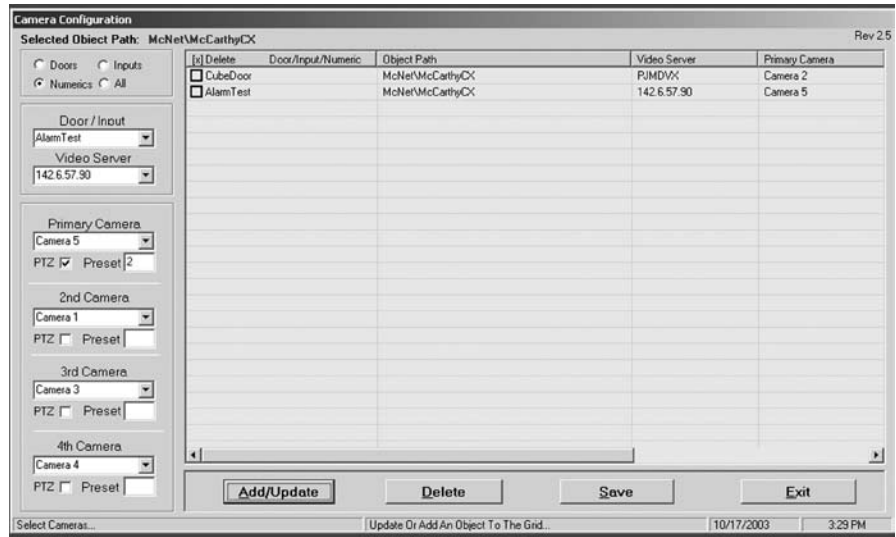
Live/Recorded Mode



Live/Live Mode with Personnel Search (Video Mon Plus)

CONFIGURING VIDEO MONITOR

An easy-to-use administration program makes configuring Video Monitor on the Andover Continuum CyberStation a snap! Use a single Administration Screen with drop-down menus and radio buttons to assign up to four cameras per door or point, select the applicable video server, designate primary and secondary cameras, set PTZ presets, or add new camera links at any time. Simply click "Save" after adding or updating a configuration to the database. The Video Monitor program automatically gathers configuration information from both the Andover Continuum network controllers and the Integral video recording units and creates the links between the points and the cameras, ensuring seamless integration and configuration.



Video Monitor Administration Screen

SPECIFICATIONS

Video Monitor

VIDEO HANDLING

Video Sizes:

320x240, 640x480, 800x600

Video Export Formats:

Bitmap, AVI, XPress Video

Video Export Sizes:

160x120, 320x240, 400x300,
640x480, 760x560

Max. Viewing Times:

Pre-alarm - 300 sec.
Post-alarm - 300 sec.

Max. Alarm Recording Times:

Depends on DVR pre-alarm buffer

Viewing Modes:

Live/Live, Live/Recorded, Single Live

OBJECT ALARM LINKS

Max. Cameras per Object

(Viewable/Recorded):

4, each with selectable PTZ preset

Supported Andover Continuum Objects:

Doors, Infinity Inputs, Infinity Numerics

Supported BACnet Objects:

Analog Input, Analog Value, Binary Input, Binary Value, Multi-state Input, Multi-state Value

DVR COMPATABILITY*

Integral:

DVX 3.1+
DVX 4.1+
DigitalSentry
Min. 64MB Pre-alarm Buffer
May Require Software Update of DVR

CYBERSTATION COMPATABILITY

Andover Continuum:

Rev. 1.4+
Rev. 1.6+ required for:
- Alarm Function Button
- BACnet Objects

VERSIONS

P/N:
VIDMON

P/N:
VIDMON-PLUS

Copyright © 2006, TAC
All brand names, trademarks and registered trademarks are the property of their respective owners. Information contained within this document is subject to change without notice. All rights reserved.

SDS-C-VIDEOMONITOR-US
05/06



www.tac.com

