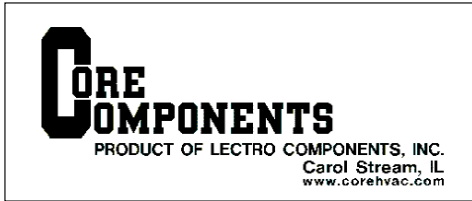


# Catalog Number LD96200



## MODEL CVR11C-0

Enclosed Relay 10A SPDT  
10-30 VAC/VDC, 120 Vac 50-60 Hz

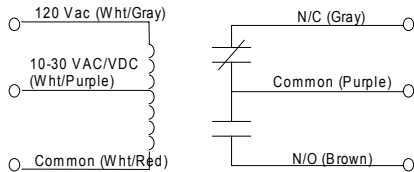
Industrial Control Device UL508

File # E202892

6D20



Unit shipped with 2 mounting screws  
And 1/2" conduit nut



Coil Voltage / Input 10-30 Vac/Vdc / 120 Vac 50-60 Hz  
 # Relays & Contact Style One (1) SPDT  
 Expected Relay Life 10 Million Operations Minimum  
 (Mechanical)  
 Operating Temperature -40 to 150° F  
 Status Indication LED = Activated  
 Dimensions 1.7" x 2.8" x 1.5"  
 Mounting Style 1/2"-14 NPT Nipple Integral  
 Lead Wire Length 24" Nominal  
 Approvals UL 508, C-UL Canada Industrial  
 Control Device  
 Housing Cycoloy C2950 UL94-5V, Plenum,  
 NEMA1  
 Override Controls None  
 Dry Circuit Operation Optional

### COIL CURRENT

Each Circuit

30 mA @ 10 Vac	12 mA @ 10 Vdc
32 mA @ 12 Vac	14 mA @ 12 Vdc
42 mA @ 24 Vac	16 mA @ 24 Vdc
50 mA @ 30 Vac	18 mA @ 30 Vdc
35 mA @ 120 Vac	

DROP OUT= 2.0 Vac / 2.8 Vdc / 35 Vac  
 PULL IN = 9 Vac / 10 Vdc / 105 Vac

### CONTACT RATING

Each Relay

10 Amps Resistive	28 Vdc / 277 Vac
480 VA Pilot Duty	240 / 277 Vac
480 VA Ballast	277 Vac
TV-5 (N/O)	120 Vac
TV-2 (N/C)	120 Vac
Tungsten 240W N/C	120 Vac
Tungsten 600W N/O	120 Vac
1/3 hp (N/O)	120 Vac / 240 Vac
1/4 hp (N/O)	277 Vac
1/6 hp (N/C)	120 Vac / 240 Vac
1/8 hp (N/C)	277 Vac

Similar Unit: CVR11C-V (10-30Vdc/Vac, 277 Vac 50/60 Hz Input)