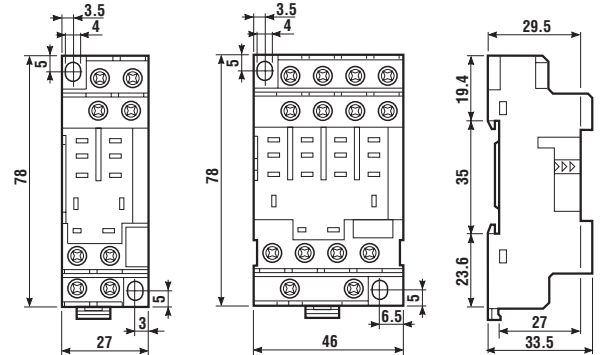




| Relay type  |        | 56.32   | 56.34   |
|---|--------|---------|---------|
| Screw terminal socket: panel or 35 mm rail (EN 50022) mount | BLUE   | 96.72   | 96.74   |
|   | BLACK* | 96.72.0 | 96.74.0 |
| Retaining clip (supplied with socket)                       |        | 094.71  | 096.71  |
| Modules   |        | 99.01   | 99.01   |



Approvals  
(according to type):



- RATED VALUES: 12 A - 250 V
- DIELECTRIC STRENGTH:  $\geq 2$  kV AC
- PROTECTION CATEGORY: IP 20
- AMBIENT TEMPERATURE: (-40...+70)°C
- TORQUE: 0.8 Nm
- MAX WIRE SIZE:

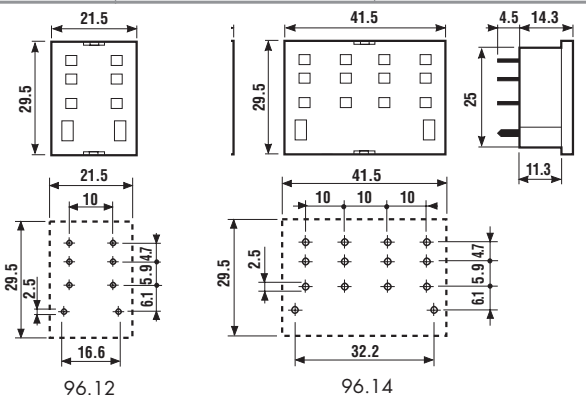
|                 | solid wire  | flexible wire |
|-----------------|-------------|---------------|
| mm <sup>2</sup> | 1x4 / 2x4   | 1x4 / 2x2.5   |
| AWG             | 1x12 / 2x12 | 1x12 / 2x14   |



| 99 Series modules for 96.72 and 96.74 socket |                     | BLUE           | BLACK*           |
|--|---------------------|----------------|------------------|
| Diode  | (6...220) V DC      | 99.01.3.000.00 | 99.01.3.000.00.0 |
| Diode (inverted polarity)                    | (6...220) V DC      | 99.01.2.000.00 | 99.01.2.000.00.0 |
| LED  | (6...24) V DC/AC    | 99.01.0.024.59 | 99.01.0.024.59.0 |
| LED  | (28...60) V DC/AC   | 99.01.0.060.59 | 99.01.0.060.59.0 |
| LED  | (110...240) V DC/AC | 99.01.0.230.59 | 99.01.0.230.59.0 |
| LED + Diode                                  | (6...24) V DC       | 99.01.9.024.99 | 99.01.9.024.99.0 |
| LED + Diode                                  | (28...60) V DC      | 99.01.9.060.99 | 99.01.9.060.99.0 |
| LED + Diode                                  | (110...220) V DC    | 99.01.9.220.99 | 99.01.9.220.99.0 |
| LED + Diode (inverted polarity)              | (6...24) V DC       | 99.01.9.024.79 | 99.01.9.024.79.0 |
| LED + Diode (inverted polarity)              | (28...60) V DC      | 99.01.9.060.79 | 99.01.9.060.79.0 |
| LED + Diode (inverted polarity)              | (110...220) V DC    | 99.01.9.220.79 | 99.01.9.220.79.0 |
| LED + Varistor                               | (6...24) V DC/AC    | 99.01.0.024.98 | 99.01.0.024.98.0 |
| LED + Varistor                               | (28...60) V DC/AC   | 99.01.0.060.98 | 99.01.0.060.98.0 |
| LED + Varistor                               | (110...240) V DC/AC | 99.01.0.230.98 | 99.01.0.230.98.0 |
| RC circuit                                   | (6...24) V DC/AC    | 99.01.0.024.09 | 99.01.0.024.09.0 |
| RC circuit                                   | (28...60) V DC/AC   | 99.01.0.060.09 | 99.01.0.060.09.0 |
| RC circuit                                   | (110...240) V DC/AC | 99.01.0.230.09 | 99.01.0.230.09.0 |
| No - remanence                               | (110...240) V AC    | 99.01.8.230.07 | 99.01.8.230.07.0 |



| Relay type     |        | 56.32   | 56.34   |
|----------------|--------|---------|---------|
| P.C.B. socket  | BLUE   | 96.12   | 96.14   |
|                | BLACK* | 96.12.0 | 96.14.0 |
| Retaining clip |        | 094.51  | 094.51  |



Approvals  
(according to type):



- RATED VALUES: 12 A - 250 V (10 A max for each contact circuit)
- DIELECTRIC STRENGTH:  $\geq 2$  kV AC
- AMBIENT TEMPERATURE: (-40...+70)°C

\*Available on request